

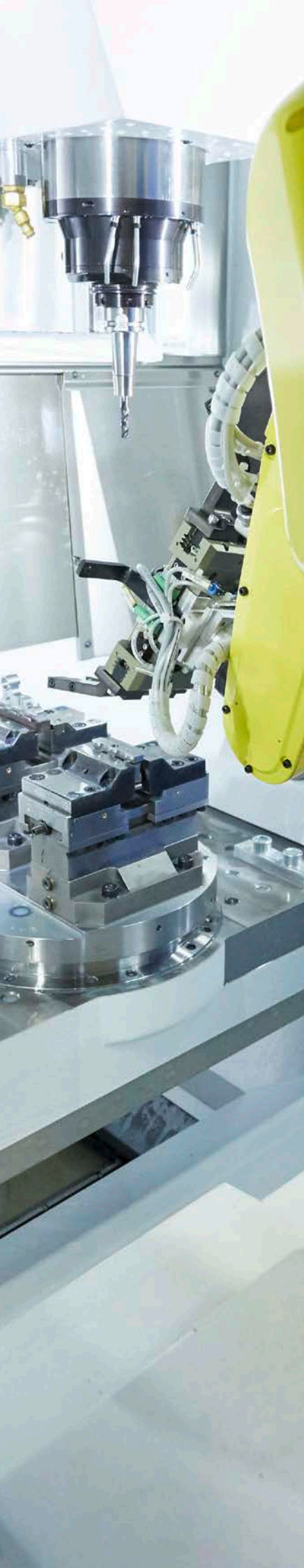
PAX Seat Fittings

Quick Change (QC)

Standard

Seat Belt Shackles





In close collaboration with air-frame and seat manufacturers allsafe has developed in the past years an excellent expertise for the **design and production of passenger seat fittings**.

These fittings bring significant improvement in handling time to our customers, combined with high reliability, excellent performance / weight ratio and economical production processes.

Today we are already working on solutions that are scheduled to enter into service in the next decade, responding to the requirements for reduced installation time as well in the Final Assembly Line as for reconfiguration. These products will feature integrated fastening solutions, adapted to the specific seat design.

If you would like to benefit from our know-how we would be pleased to discuss your projects with you – allsafe is committed to support you from the early design phase with first prototypes until full qualification of serial products.



Rear leg seat fitting



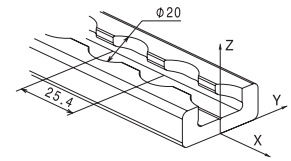
QC front leg seat fitting



QC front leg seat fitting


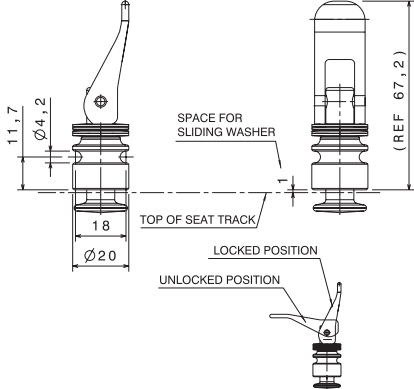

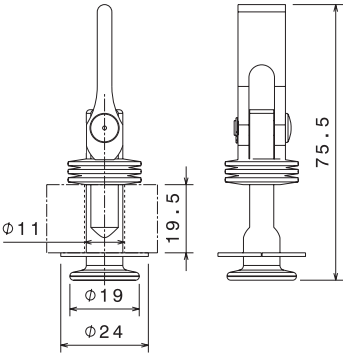

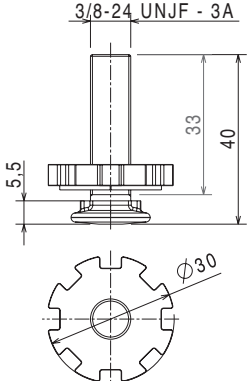
PAX Seat Fittings

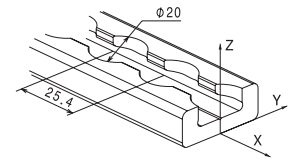
Integrated function combined with an interesting strength-weight-ratio.



Front Leg Seat Fittings

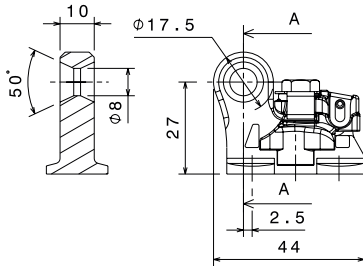


	Description	Material	Weight	Order code
 	<p>Front Leg QC Fitting</p> <p>To be incorporated into the front seat leg</p> <p>Geometry can be adapted to customers requirements</p>	<p>Stud: CRES, passivated</p> <p>Body and lever: aluminium, anodized</p>	51 grs.	110089-10
 	<p>Front Leg QC Fitting (loose item kit)</p> <p>To be incorporated into the front seat leg</p> <p>tested according to Airbus seat load spectra requirements for:</p> <p>A 320 A 330 A 350 A 380</p>	<p>Stud: zinc-nickel plated</p> <p>Lever: aluminium, anodized</p>	45 grs.	114211-10
 	<p>Front Leg Fitting</p> <p>To be incorporated into the front seat leg</p>	<p>Stud: zinc plated</p> <p>Nut: aluminium, anodized</p>	32 grs.	110937-10



► Rear Leg Seat Fittings

NEW!



Rear Leg Double Stud Fitting

Description

For high load 16 g applications
 Ultimate load: *
 $F_{XZ45^\circ} > 45.0 \text{ kN} / 10100 \text{ lbf}$
 interchangeable with 160035-10

Material

Body and plunger: steel, zinc-nickel plated

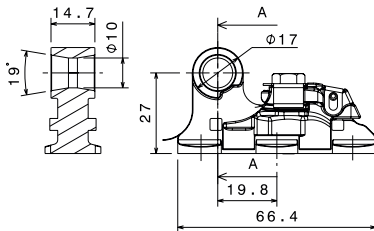
Weight

98 grs.

Order code

112002-10

NEW!



Rear Leg Triple Stud Fitting

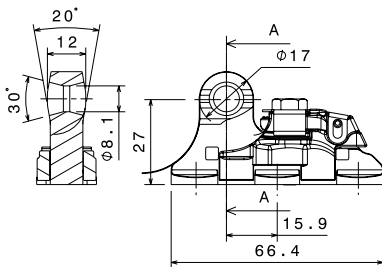
For high load 16 g applications
 Ultimate load: *
 $F_{XZ45^\circ} > 50.0 \text{ kN} / 11250 \text{ lbf}$
 interchangeable with 160036-20

Body and plunger: steel, zinc-nickel plated

149 grs.

112003-10

NEW!



Rear Leg Triple Stud Fitting

For high load 16 g applications
 Ultimate load: *
 $F_{XZ45^\circ} > 50.0 \text{ kN} / 11250 \text{ lbf}$

Body and plunger: steel, zinc-nickel plated

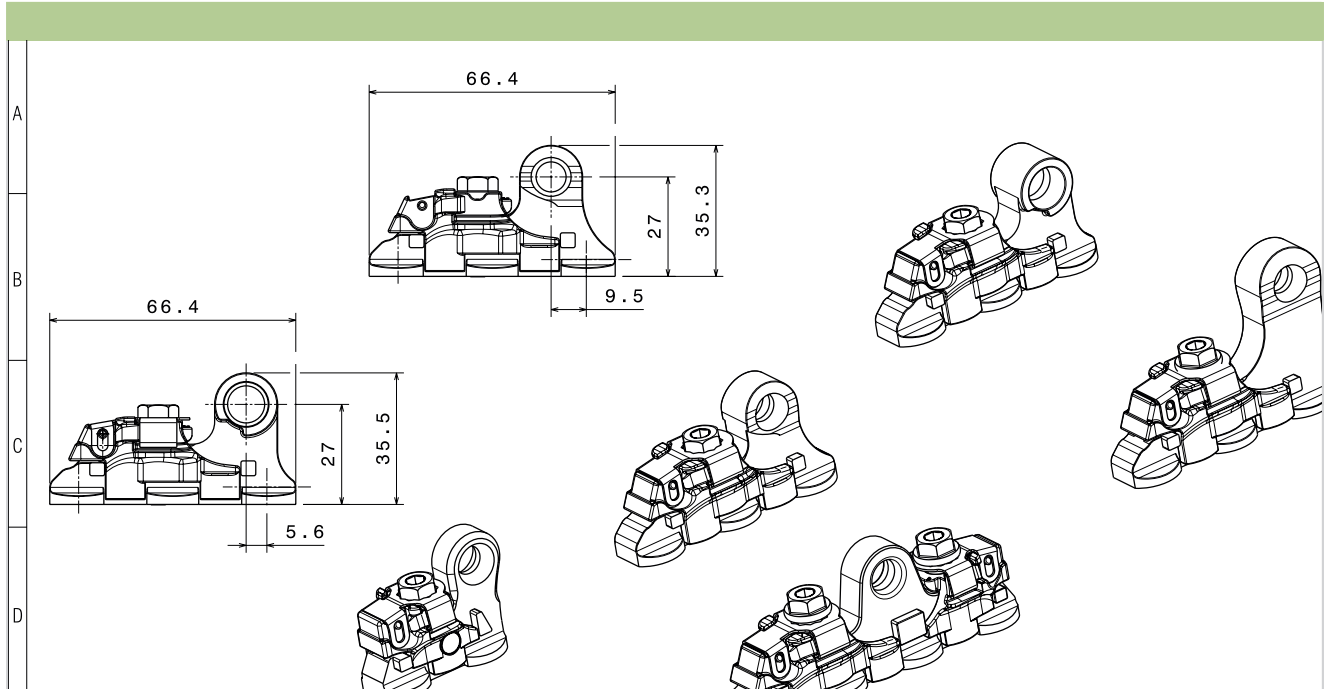
146 grs.

112003-20

* when installed in heavy duty track according to AS33601 with appropriate fasteners

Other configurations: Available upon request, ask us!

► Other configurations: Available upon request, ask us!



► Still available

		Order code
	Rear Leg Double Stud Fitting	160035-10
	Rear Leg QC Triple Stud Fitting	160036-10
	Rear Leg QC Triple Stud Fitting	160036-20
	Rear Leg QC Quadruple Stud Fitting	160037-10

Seat Belt Shackles



These Shackles are used to fix the passenger restraint belt to the seat structure. The Seat Belt Shackles are designed to incorporate high strength and low profile design with today's generation of lightweight seats.

► Seat Belt Shackles for PAX Seats

	Description	Material	Weight	Order code
	Seat Belt Shackle 15° Reinforced Supersedes P/N 41 713-31, Ultimate load: > 16 kN / 3500 lbf	Stainless steel	30 grs.	110713-31
	Seat Belt Shackle 15° Reinforced Supersedes P/N 41 713-32, Ultimate load: > 16 kN / 3500 lbf	Stainless steel	30 grs.	110713-32

Seat Track Fittings

Special Fittings

Are you looking for a fitting solution for a special requirement? No problem!
 Our engineering department is specialized in development and testing of all types of fittings for aircraft seat tracks.

► Special requirements: Challenge us!